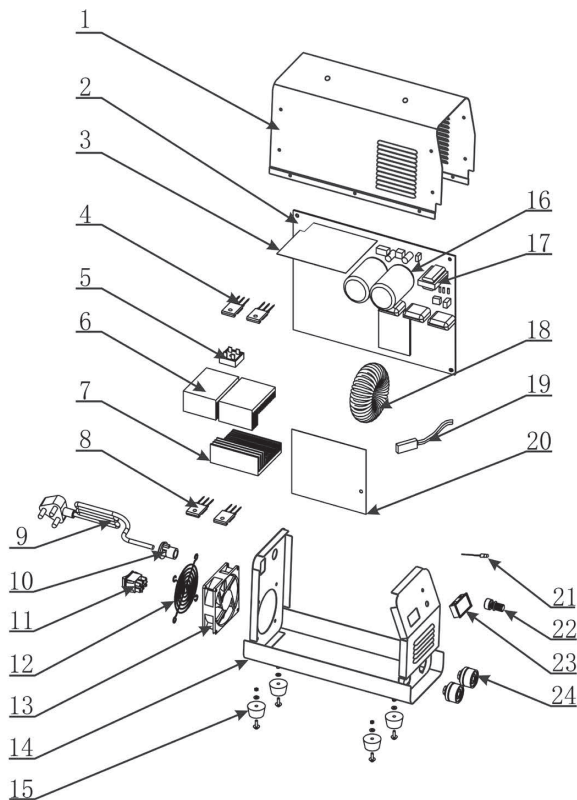


**Exploded drawing of Inverter Welding Machine RD-IW180**



## SPARE PART LIST

NO.	Components	Note
1	Cover	Protecting the machine
2	PC Board A	Protecting the machine
3	PC Board B	Protecting the machine
4	IGBT	Inverter ,switch DC to AC
5	Relay	Snubber Circuit
6	Cooling Plate A	Decreasing the temperature of IGBT
7	Cooling Plate B	Decreasing the temperature of rectifier bridge
8	Diode	Switch AC to DC
9	Power Cable	Supply power
10	Connector	Connecting the electricity
11	Switch	ON/OFF
12	Fan Cover	Protecting the fan
13	Fan	Cooling the machine
14	Machine Frame	Hold the electric board
15	Plastic Cover	Protecting the bottom of the machine
16	Capacity	Filtering
17	Transformer A	Assisting electric power
18	Transformer B	Transfer AC to DC
19	Heat Protector	Stop the current when the machine getting too hot
20	Insulating trip	Insulating
21	Over-heat pilot lamp	The lamp is on when the temperature is too high, and the machine will be back to work
22	Potentiometer	Adjusting the current
23	Digital Display	Showing current during welding
24	Quick Connector	Connecting the output cables